



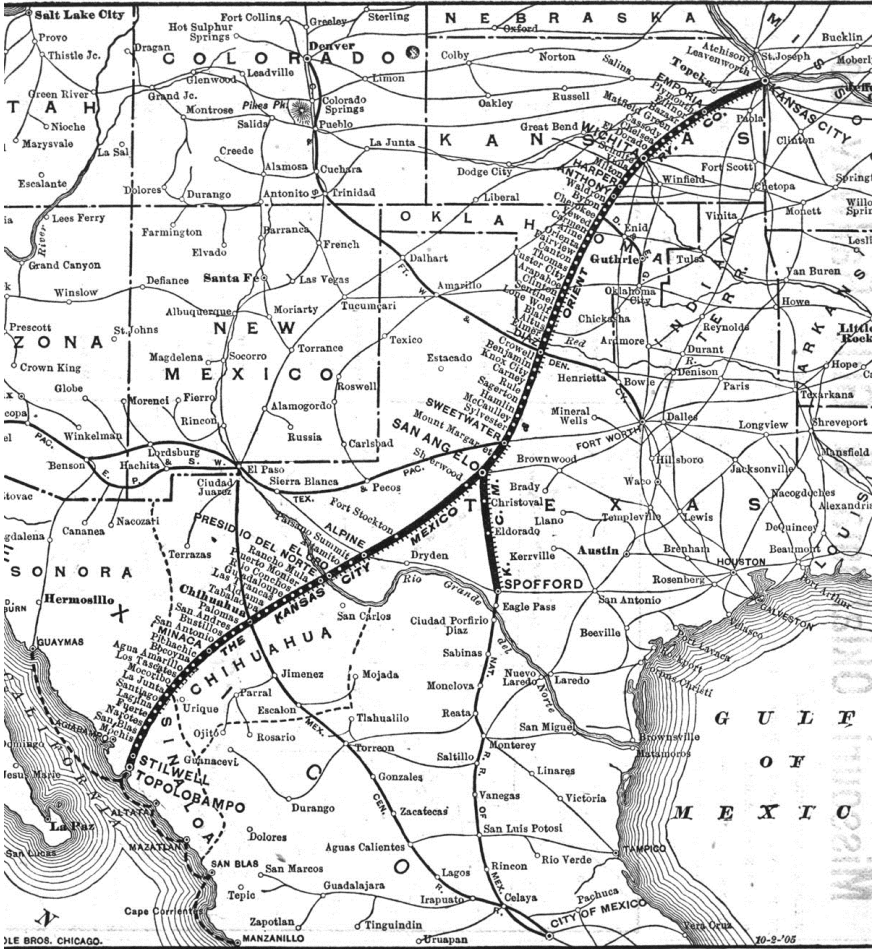
USA

Texas Pacific –  
Southwestern Rail  
Conference



# Kansas City, Mexico & Orient

- The rail line was conceived by Arthur Stillwell as the shortest land route from the Pacific coast to the central United States.
- 1901 – The first rail of the KCM&O laid in Emporia, KS



### Stations and Mileposts

0	San Angelo Jct. (Coler)
20.9	Talpa
36.9	Ballinger
45.6	Rowena
54.2	Miles
69.6 / 712	San Angelo
745.7	Mertzon
771.6	Barnhart
790.6	Big Lake
819.9	Rankin
838.6	McCamey
863.8	Baldrige
867.4	Sulphur Jct.
881.7	Fort Stockton
892.9	Belding
904.3	Chancellor
917.2	Hovey
944.3	Alpine
956.7	Paisano Jct.
969.3	Plata
1002.9	Casa Piedra
1026.7	Presidio
1029	Intl. Bridge

# Recent History of SORR / Early History of TXPF

1991

The State of Texas acquires railroad right of way and a security interest in the South Orient Railroad Company.

1999

State legislature approves funding for the Texas DOT to purchase railroad infrastructure.

State looks for operator, but only one bidder– Grupo Mexico.

2001

With State approval, Grupo Mexico adds investment, and the purchase is completed.

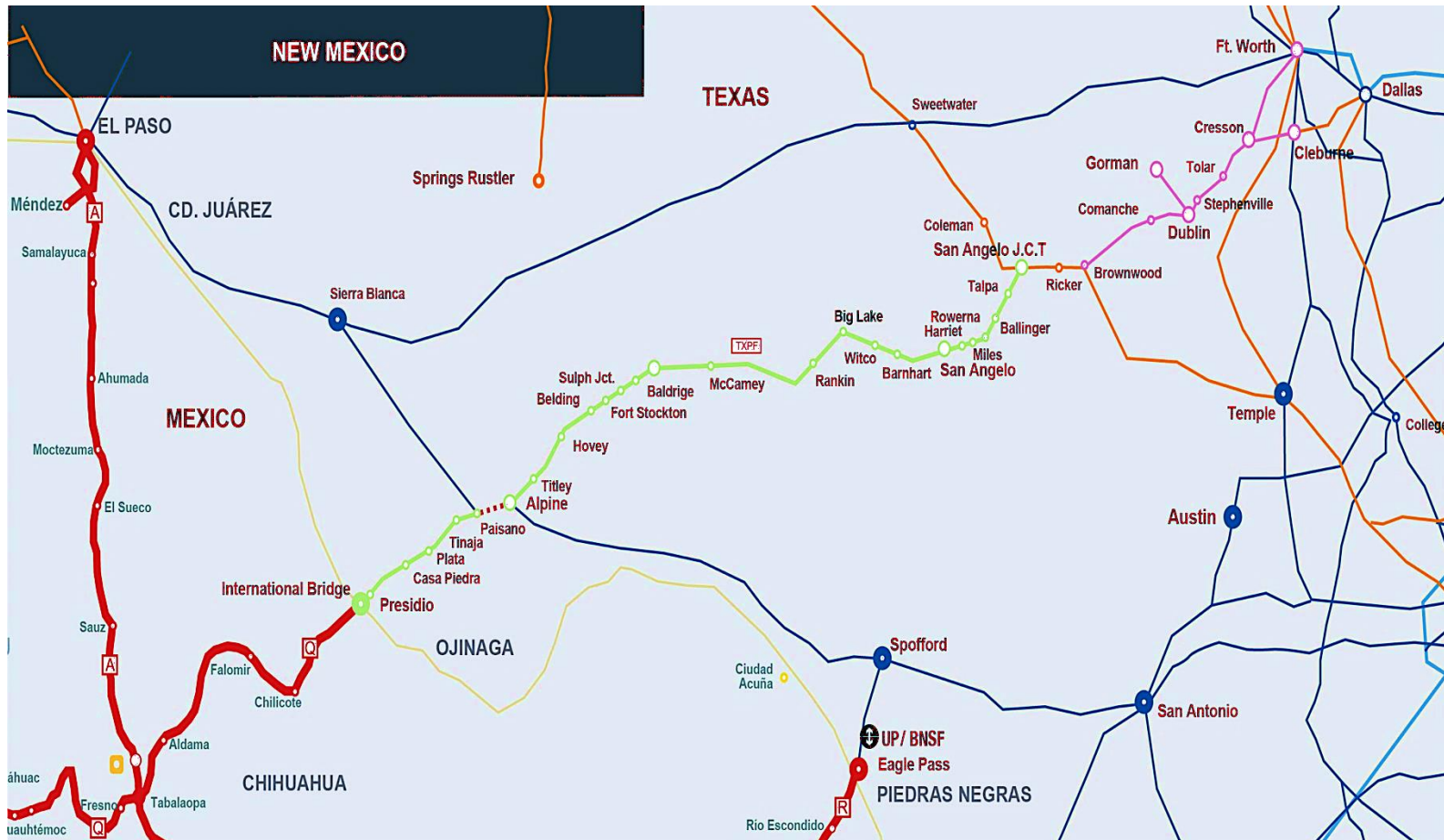
Texas Pacifico is created and begins operation with a 40-year lease and 5 10-year renewal options.

TXPF is connected with key players in USA and Mexico, offering a seamless rail service throughout Mexico, the state of Texas and beyond.



- Connecting Partners:
  - Ferromex at the International Rail Bridge, Presidio – Ojinaga
  - BNSF at San Angelo Junction
  - Fort Worth & Western at San Angelo Junction and through it:
    - UP
    - CPKC

# Texas Pacific on the South Orient Rail Line



- TXPF provides freight rail service between San Angelo Junction and Presidio, Texas, on the Mexican border
- 385 miles end to end
- 11 miles of trackage rights over the UP between Alpine and Paisano

# The First 25 Years of TXPF

- Early years: 2001–2011
- Northern White Sand years: 2012–2019
- Grin & Bear It years: 2020–2026
- The New TXPF: 2026+



## Product Mix

### Agricultural

- Grain (wheat, semolina, soy meal, sorghum)
- Cotton seed
- Pulp, paper and cellulose

### Refined petroleum / LNG

### Minerals

- Barite
- Clays
- Sand
- Salt
- Aggregates

### Cement

### Industrials

- Wind towers & blades
- Consumer goods
- Glass / tile
- Railcars

### Metals

- Steel plates
- Scrap
- Pipe

### Fertilizer & Chemicals

# Presidio Rail Inspection Projects Today

Last step to opening the Chihuahua – DFW Corridor

July 25, 2025



Oct. 28, 2025



Dec. 4, 2025



Feb. 27, 2026



# Presidio Rail Inspection Projects Today

Last step to opening the Chihuahua - DFW Corridor

April 17, 2026



May 5, 2026



May 5, 2026

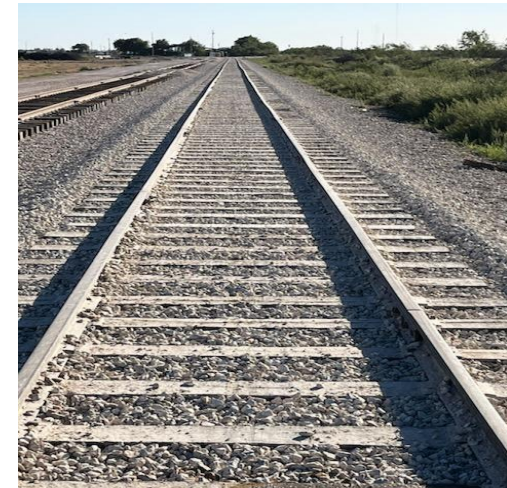
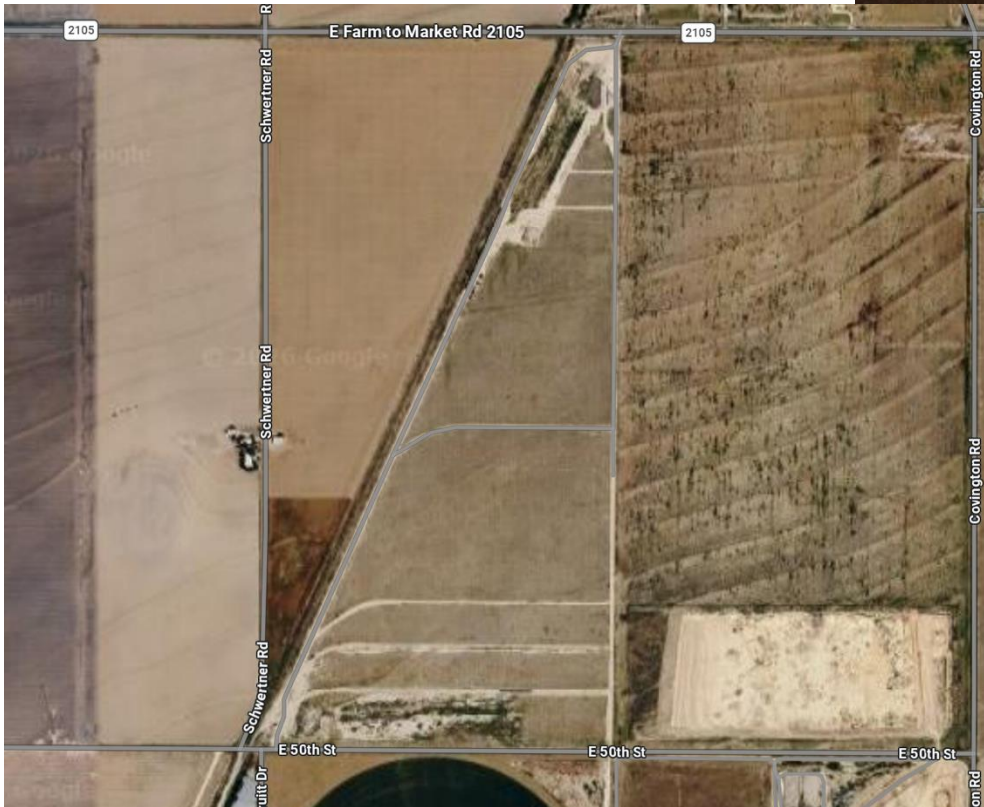


May 17, 2026



# San Angelo Rail Park– South Plains & Lamesa RR

- 180 acres, option of additional 240 ac.
- 12k track ft. installed
- 6k track ft. in stockpile
- 5 tracks in service, 3 transload tracks
- 4 active customers, 5<sup>th</sup> in process



Stan Meador,  
Sr. VP Admin. & Sales

[s.meador@txpf.us](mailto:s.meador@txpf.us)

325.277.4571

Southwestern Rail Conference

May 18, 2026

