

Silver Line EMF Project

2026 Southwestern Rail Conference

Tuesday, May 19, 2026



Silver Line EMF Project

EMF Facility

- OMF
 - Basement, 1st floor, mezzanine
- Wash Bldg.
 - Automated wash equipment
- Fuel area
 - 25,000 gal. UG tank
- Train yard
 - Parking for 8 DMU's
- Administration building

Construction

- NTP – October 2024
- Substantial Completion – March 2026



Construction Contract Overview



- General Contractor
 - Stacy Witbeck
- CMGC Contract (Alternative Delivery)
 - \$66,780,000
- Construction Manager General Contractor
 - RFQ Selection of Contractor
 - Preconstruction Phase
 - Cost Negotiation
 - Negotiation of milestones
 - Construction Phase



Risk Sharing During Negotiations

Open book sharing of risk matrix helped us identify what risk the contractor was carrying. Focused our conversations to further develop or clarify design intent to mitigate risk. This communication also allowed us to properly identify the best party to manage certain risks.

- Setting up of allowances to share risk
- Identify what was out of our control
 - Local municipality
- Success by the numbers
 - Initial GMP \$74,005,000
 - Agreed to GMP \$66,780,000
 - Reduction of \$7,225,000



EMF Building (Exterior)



EMF Building (Interior)



EMF Building (Embedded Track & Posted Rail)



Wash Building



Fueling Area



Construction During Testing & Revenue Service



Basement Construction



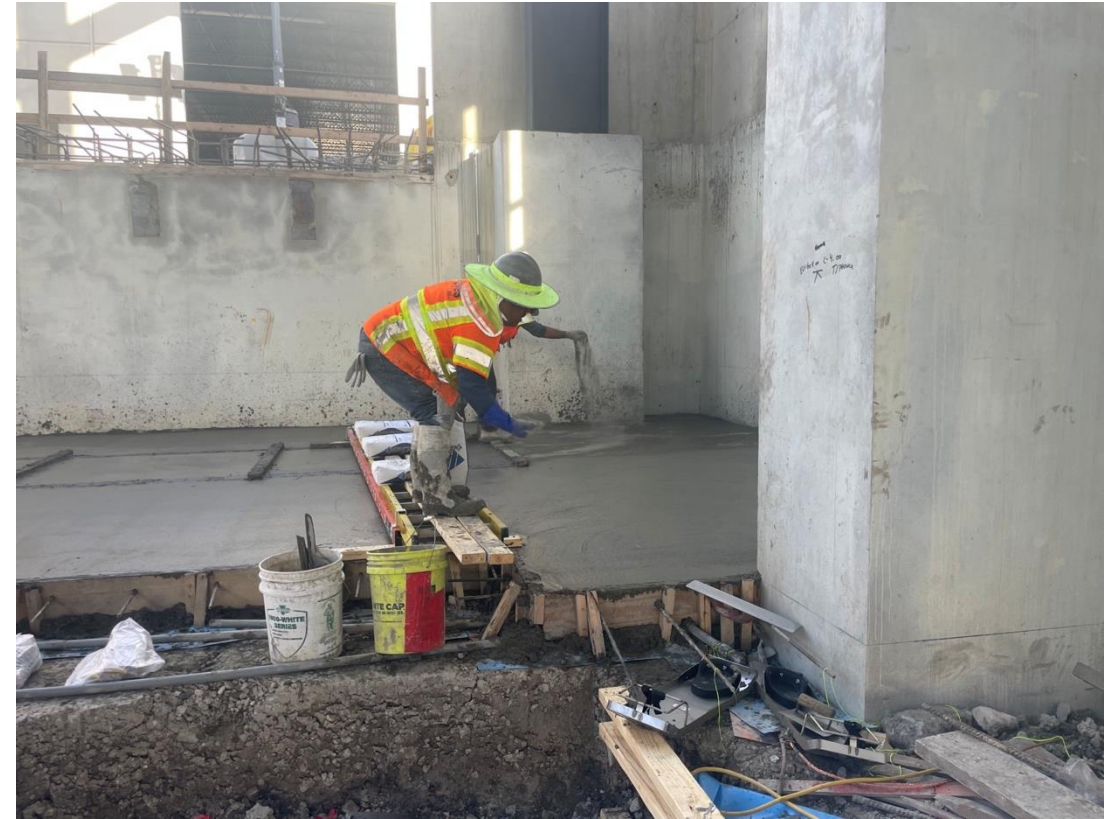
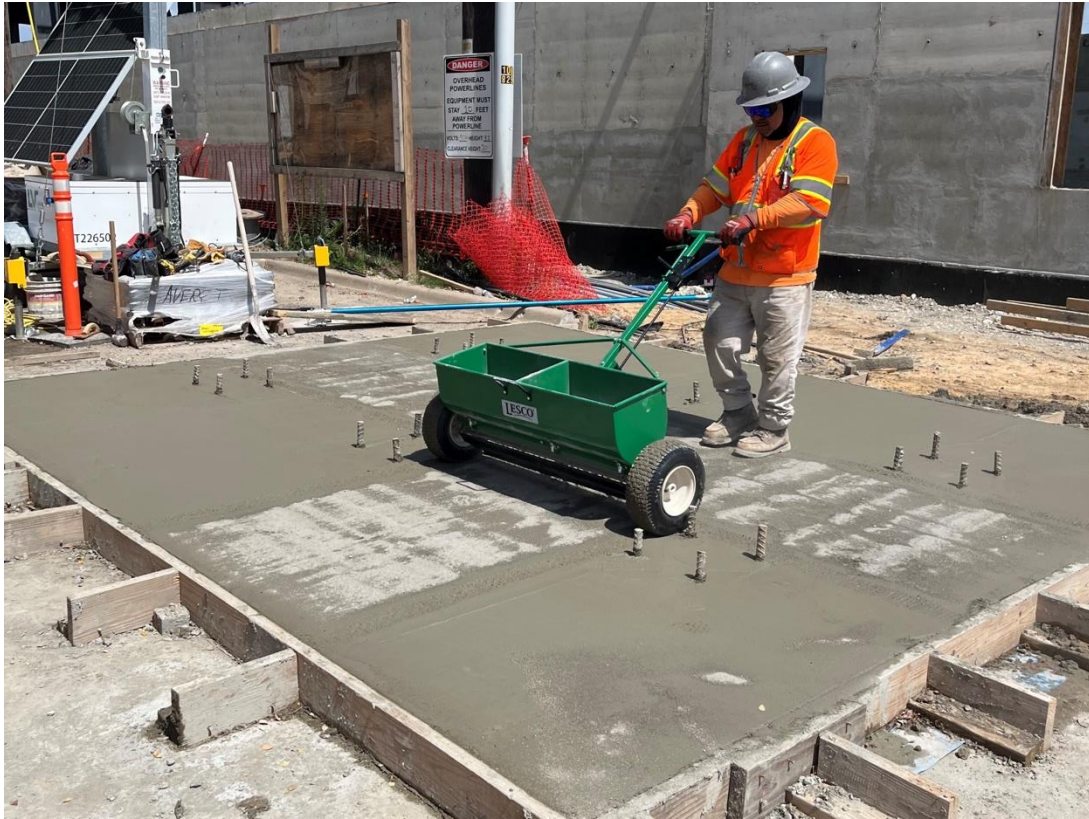
Construction Phasing



Specialized Equipment



Concrete Finish



Thank You
Silver Line EMF Project

