

The logo for TAMM Corporation features the letters 'TAMM' in a bold, red, sans-serif font. A white, curved line sweeps across the letters from the top left to the bottom right. To the left of the 'TAMM' text is a black graphic consisting of several parallel, slanted lines that create a sense of motion or speed. To the right of the 'TAMM' text, the word 'Corporation' is written in a bold, black, italicized serif font. The entire logo is set against a white background with a red border and is overlaid on a background of light red, slanted rectangular shapes.

TAMM Corporation

WHAT IS A SHORTLINE RAILROAD?

- Defined as a Class 3 railroad, annual operating revenue of less than \$37.4M
- Most were once branch lines of larger railroads, abandoned or spun off
- Entrepreneurial in truest sense, small businesses focused on customer service and cost control
- First and last mile of the freight journey - interface between customers and Class 1 railroads
 - providing services that are not profitable for a higher cost, large company
- Reduce public tax and infrastructure burden for roads

SHORTLINE RAIL INDUSTRY

United States

- More than 560 shortline railroads
- Employing over 18,300 people
- Operating 50,000 miles of track in 49 states - 38% of rail network
- Serving over 12,000 shippers, that employ over 1,000,000 people
- Paying nearly \$1B in taxes, average of 20% of revenue
- Infrastructure built and maintained with private funds
- Vital role linking rural America to the Class 1 rail network

*source ASLRRA 2014 facts/figures



TEXAS SHORTLINE FACTS

- 41 shortline railroads, 20% of rail network
- Employ almost 1,000 people
- Handle over 387,000 carloads of freight
 - Takes 1,024,000 trucks off the road
 - Savings of an estimated \$45M in pavement damage
- Infrastructure built and maintained with private funds
- Pay significant taxes on property and earnings
- Often the life blood of small towns and shippers
- We bring jobs, tax base, vitality and growth

*source ASLRRRA 2014 facts/figures



The logo for TAMM Corporation features the letters 'TAMM' in a bold, red, sans-serif font. A white swoosh underline passes through the letters. To the left of the 'TAMM' text is a black graphic consisting of several parallel lines that taper to a point, suggesting motion or speed. To the right of the 'TAMM' text, the word 'Corporation' is written in a bold, black, italicized sans-serif font. The entire logo is centered within a white rectangular area that has a thin red border. The background of the slide is white with a red header and footer, and faint, light-colored geometric shapes in the lower right.

TAMM Corporation

TNW CORPORATION

- **Railroad and Transportation Logistics focus**
- **Long-term, grow and hold investment strategy**
- **A Texas company - Corporate offices in Dallas, Tx**
- **Founded in 1982**
- **Privately owned by Murchison Capital Partners**

TNW CORPORATION

- **3 Shortline Railroads**
 - **Offering complete scope of rail services**
 - **Great customers, large and small**
 - **Diverse commodities and markets served**
- **3 Logistics Centers**
 - **Offering storage capacity of over 13,000 railcars**
 - **Transloading, warehousing, ground storage**
 - **Excellent highway and rail access**

TNW CORPORATION

- **Strong, Experienced Leadership and Employee Team**
- **Here to Serve**
 - **Investing in our customers - \$8.5M capital invested in track/structures in 2015**
 - **Tailored Standard Operating Procedures for every customer**
 - **24 Hour Customer Hotline**
- **Partnership Driven**
 - **Customers, Class 1 Railroads**
 - **Communities**
 - **Economic Development**



TNW CORPORATION

- **A place to work and grow**
 - **Employees come first - Culture of Respect and Engagement**
 - **Great pay and industry leading benefits**
 - **Profit sharing for all employees**
 - **Training, strengths based development, and promotion from within**

OUR CORE VALUES

- **Integrity** - *“We will act with truth and honesty”*
- **Safety** - *“We believe all accidents and injuries are preventable”*
- **Servant Leadership** - *“We will lead by example to empower each other”*
- **Quality** - *“We strive for excellence in all that we do”*



TXNW RAILWAY

- Texas Northwestern Railway - began operations in 1982.
- Sunray, Tx - North of Amarillo in panhandle
- Largest private car storage facility in United States
- 10 miles of mainline track
- Class 1 interchange with BNSF
- Commodities include: asphalt, grain, fertilizer, and chemicals
- Customers include Valero, Gavilon, and Continental Carbon



- 640 acre facility
- Railcar Storage
Capacity of almost
10,000 cars for both
short and long-term
needs.
- Transloading services
- Ground storage
- Excellent Highway and
Rail access
- Zoning and Utilities
- Warehouse options



TXR RAILWAY

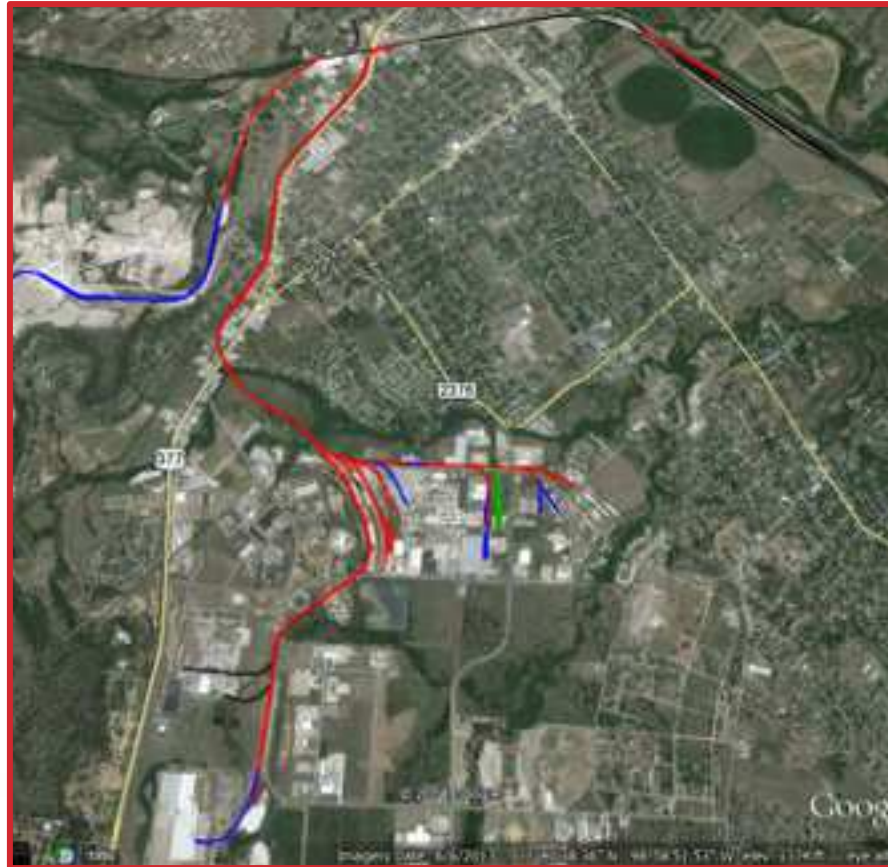
- Texas Rock Crusher Railway founded in 1998
- Brownwood, Tx
- 13 miles of mainline track
- Class 1 interchange with BNSF
- Commodities include aggregate, asphalt, grain, chemicals, porcelain, and glass
- Customers include Vulcan Materials, Kohler, Chevron Phillips, Wright Asphalt, and VRC



Camp Bowie Industrial Area

A TNW Company

- **Brownwood Industrial Park**
- **Anchored by Kohler and 3M**
- **Growing! 3 new shippers in 2015**
- **Exclusively Served by the TXR Railway**
- **Development sites available**
- **Excellent highway and rail access**
- **Car storage options**



TXGN RAILWAY

- Texas Gonzales and Northern Railway, founded in 1992
- Harwood, Tx - off I-10 - Heart of the Eagle Ford Shale
- 15 miles of mainline track
- Class 1 interchange with Union Pacific
- Commodities include: crude oil, grain, sand, animal feed meals, and metal products
- Customers include Halliburton, Holmes Food, Jimco, Purina, Stratflex, and Wildcat



Eagle Ford Logistics Center

A TNW Company

- 500 acre facility
- Rail car storage for 3,500 cars
- Loop track - full unit trains
- Transloading and Ground Storage
- Major interstate and rail access - I-10, TXGN/UP
- Industrial sites available
- Special Services:
 - Rail car washing
 - Rail car scrapping
 - Sand transloading and storage
 - Truck weighing

N. MAIN TO
HARWOOD

S. MAIN TO TOWN



TO IH-10

TO GONZALES



tnwcorporation.com

NEED

- Recognition of the value shortline railroads bring
- Economic Development programs to help with new construction costs for sidings and new industry service
 - tied to new jobs and tax base
- Increased funding and support for road crossing and signalization maintenance
- Programs to encourage private infrastructure investment
 - Tax benefits
 - State backed rail finance options for 286K and Bridges

WE NEED YOUR HELP

- **More focus on shortlines at future events like Southwest Rail Conference**
- **Stronger TxDot Rail Division**
- **An educated legislature**
- **State economic development leadership that engages with shortline railroads**
- **Supplier and contractor voice**

Shortline Railroads bring jobs, tax base, vitality and growth!



tnwcorporation.com