

# **GREX<sup>®</sup>**

## **Real Rail Solutions**

### **GREX Product and Service Overview**

**The 12<sup>th</sup> Annual Southwestern Rail Conference  
Dallas, Texas**

**January 22, 2016**

- Evolution of core services through strong railroad partnerships and investment in technology solutions



1993  
2015



# Technology Solutions

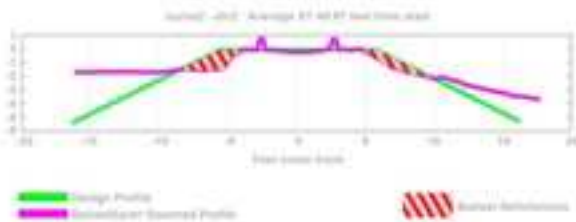
Aurora<sup>®</sup> Track Inspection

Aurora Xi<sup>™</sup> Track Inspection

BallastSaver<sup>®</sup> Inspection

Bridge Monitoring

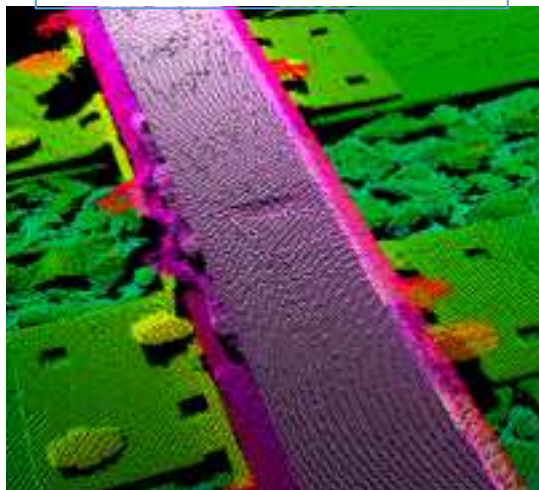
BallastSaver calculates and reports the amount of ballast deficiency



# Measurement & Condition Examples

GEORGETOWN RAIL EQUIPMENT COMPANY

Rail End Mismatch at Joint



Hollow Tie

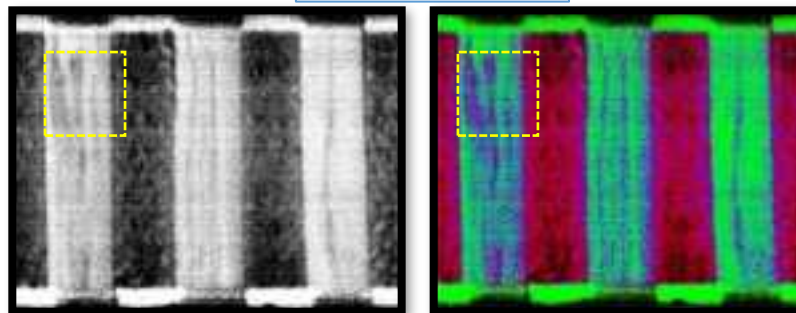
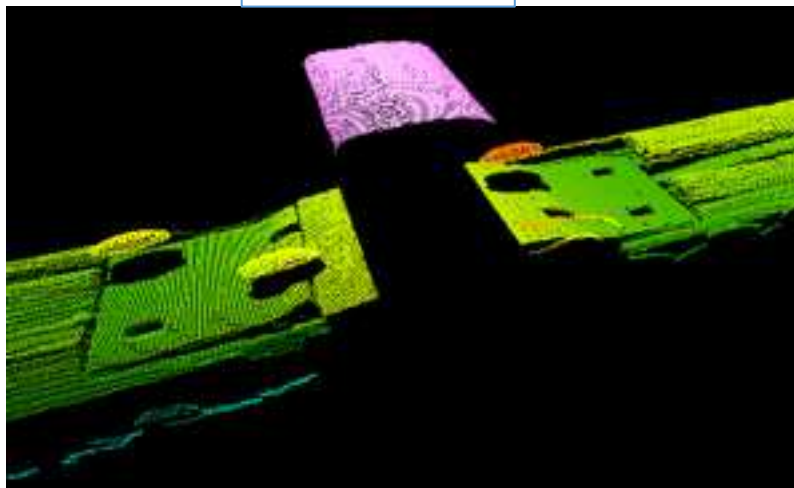


Plate Cutting



Ballast Deficiency





**GREX<sup>®</sup>**

**Real Rail Solutions**

**Thank You!**